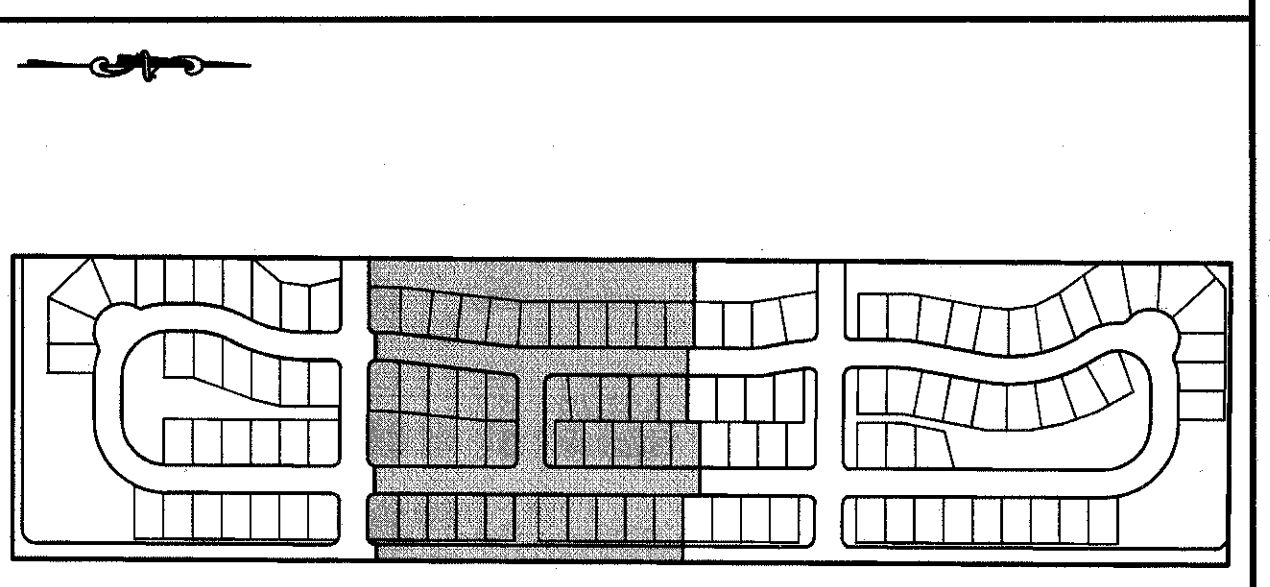
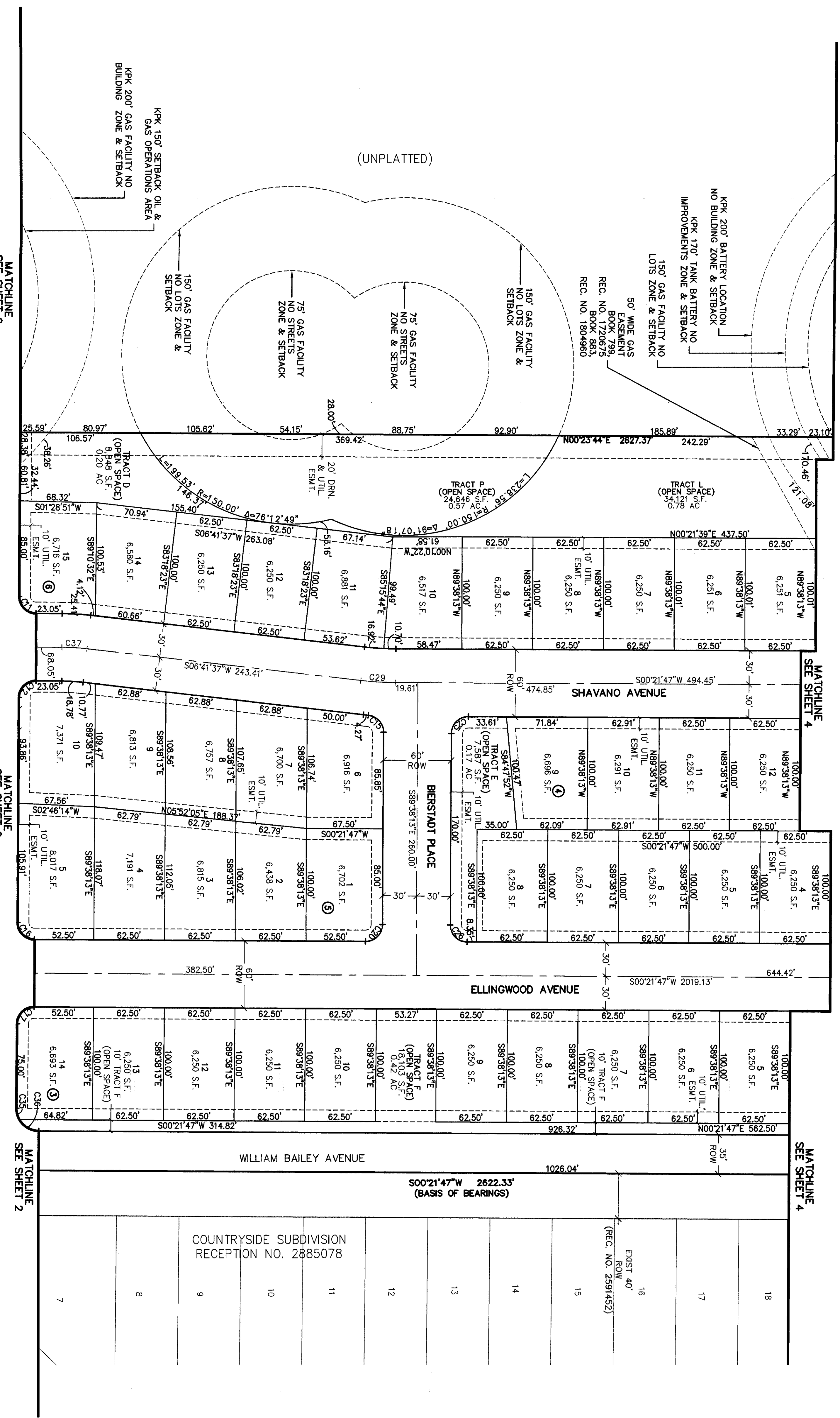


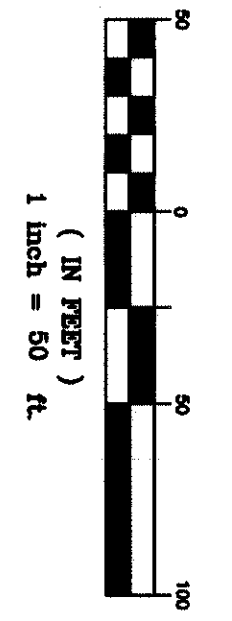
WESTVIEW SUBDIVISION
 E 1/2 E 1/2 SW 1/4 SECTION 25, TOWNSHIP 2 NORTH, RANGE 68 WEST OF THE 6TH P.M.
 TOWN OF FREDERICK, COUNTY OF WELD, STATE OF COLORADO
 39.46 ACRES TOTAL 121 DWELLING UNITS
 FINAL PLAT
 SHEET 3 OF 5



LEGEND

- FOUND MONUMENT AS DESCRIBED
- SET #5 REBAR W/PLASTIC CAP MARKED "PLS 29430"
- BUILDING ENVELOPE

NOTE:
 1. REFER TO SHEET 5 FOR LINE & CURVE TABLE.



DATE OF PREPARATION 10/30/15

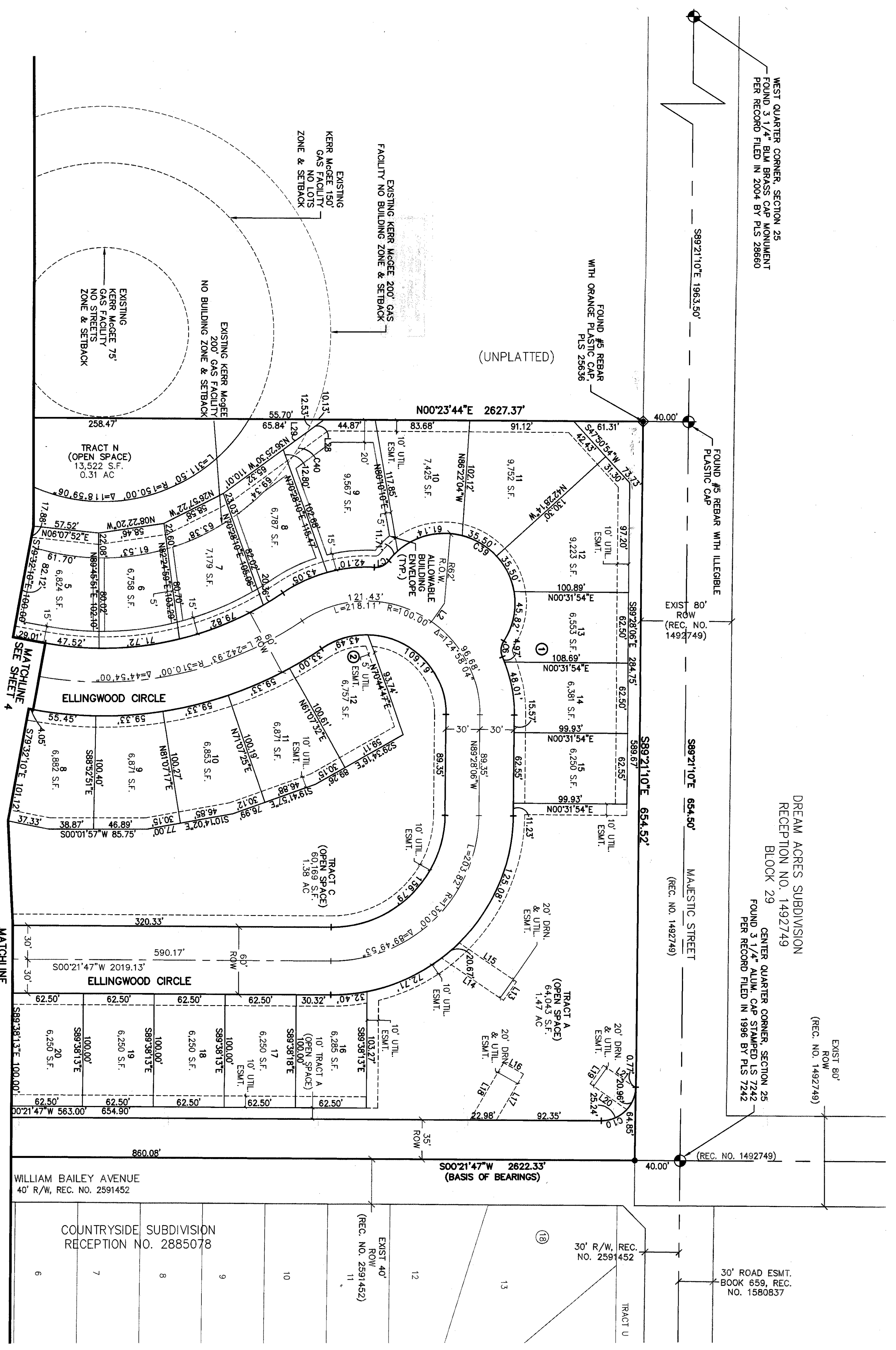
ATWELL
 www.atwell-group.com
 303.452.1100
 1000 14TH ST.
 BLDG 501 WELD COUNTY, CO

WESTVIEW SUBDIVISION
 E 1/2 E 1/2 SW 1/4 SECTION 25, TOWNSHIP 2 NORTH, RANGE 68 WEST OF THE 6th P.M.
 TOWN OF FREDERICK, COUNTY OF WELD, STATE OF COLORADO
 39.46 ACRES TOTAL 121 DWELLING UNITS
 FINAL PLAT
 SHEET 5 OF 5

WEST QUARTER CORNER, SECTION 25
 FOUND 3 1/4" BLM BRASS CAP MONUMENT
 PER RECORD FILED IN 2004 BY PLS 28660

DREAM ACRES SUBDIVISION
 RECEPTION NO. 1492749
 BLOCK 29
 CENTER QUARTER CORNER, SECTION 25
 FOUND 3 1/4" ALUM. CAP STAMPED LS 7242
 PER RECORD FILED IN 1996 BY PLS 7242

EXIST 80'
 ROW
 (REC. NO. 1492749)



LINE TABLE

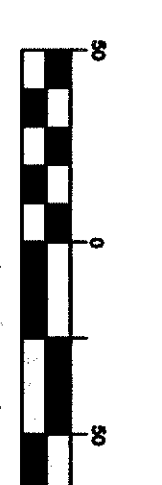
LINE	LENGTH	BEARING
L1	26.32'	S00°23'44" W
L2	19.74'	S54°51'51" E
L3	8.82'	N45°18'03" E
L4	40.86'	S38°53'28" E
L5	20.00'	S51°06'34" W
L6	40.08'	S38°53'28" E
L7	20.00'	S53°41'53" E
L8	24.54'	N54°18'07" E
L9	30.42'	N54°18'07" E
L10	33.09'	S47°34'39" E
L11	28.81'	N42°25'21" E
L12	20.00'	S47°34'39" E
L13	20.00'	S55°24'21" E
L14	66.09'	N14°35'39" E
L15	60.94'	N14°35'39" E
L16	20.00'	N29°51'55" E
L17	42.09'	S60°08'05" E
L18	58.41'	S60°08'05" E
L19	20.00'	S54°45'55" E
L20	39.60'	S53°14'05" W
L21	34.95'	S53°14'05" W
L22	54.90'	S39°32'37" E
L23	20.00'	N50°27'42" E
L24	42.67'	S39°32'37" E
L25	47.08'	S89°56'05" E
L26	20.00'	S00°03'58" W
L27	47.19'	S89°56'05" E
L28	19.06'	N36°25'30" W
L29	25.62'	N36°25'30" W

CURVE TABLE

CURVE	DELTA	LENGTH	RADIUS
C1	101°19'08"	36.02'	200.00'
C2	101°19'08"	36.02'	200.00'
C3	108°06'04"	35.26'	200.00'
C4	90°17'08"	23.64'	150.00'
C5	89°42'52"	23.49'	150.00'
C6	55°35'49"	14.56'	150.00'
C7	55°35'49"	14.56'	150.00'
C8	90°17'08"	23.64'	150.00'
C9	85°05'01"	22.27'	150.00'
C10	88°42'56"	48.98'	300.00'
C11	90°00'00"	23.56'	150.00'
C12	90°00'00"	23.56'	150.00'
C13	90°00'00"	23.56'	150.00'
C14	90°00'00"	23.56'	150.00'
C15	84°27'32"	22.11'	150.00'
C16	90°00'00"	23.56'	150.00'
C17	90°00'00"	23.56'	150.00'
C18	90°00'00"	23.56'	150.00'
C19	90°00'00"	23.56'	150.00'
C20	90°00'00"	23.56'	150.00'
C21	89°42'52"	31.32'	200.00'
C22	90°17'08"	23.64'	150.00'
C23	88°42'52"	23.49'	150.00'
C24	90°17'08"	31.52'	200.00'
C25	90°00'00"	23.56'	150.00'
C26	90°00'00"	23.56'	150.00'
C27	97°47'07"	25.60'	150.00'
C28	89°42'52"	23.49'	150.00'
C29	61°19'50"	30.94'	280.00'
C30	50°06'49"	13.12'	150.00'
C31	89°50'35"	47.04'	300.00'
C32	89°50'35"	47.04'	300.00'
C33	60°00'00"	10.47'	20.00'
C34	60°00'00"	20.94'	20.00'
C35	30°00'00"	10.47'	20.00'
C36	60°00'00"	20.94'	20.00'
C37	61°19'50"	22.10'	200.00'
C38	150°36'17"	162.97'	62.00'
C39	175°17'01"	189.68'	62.00'
C40	90°7'06"	31.83'	200.00'
C41	1°27'43"	5.10'	200.00'
C42	191°7'49"	57.25'	170.00'
C43	94°33'35"	28.86'	170.00'

LEGEND

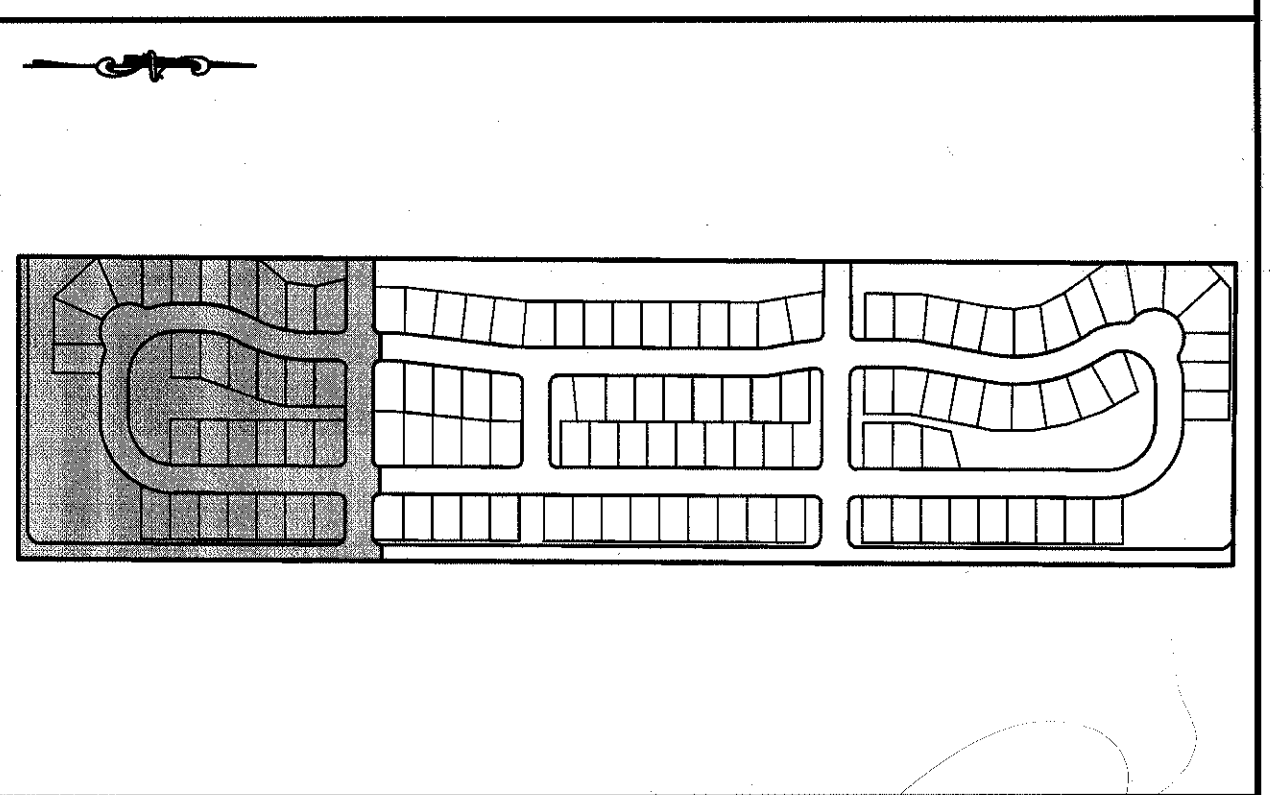
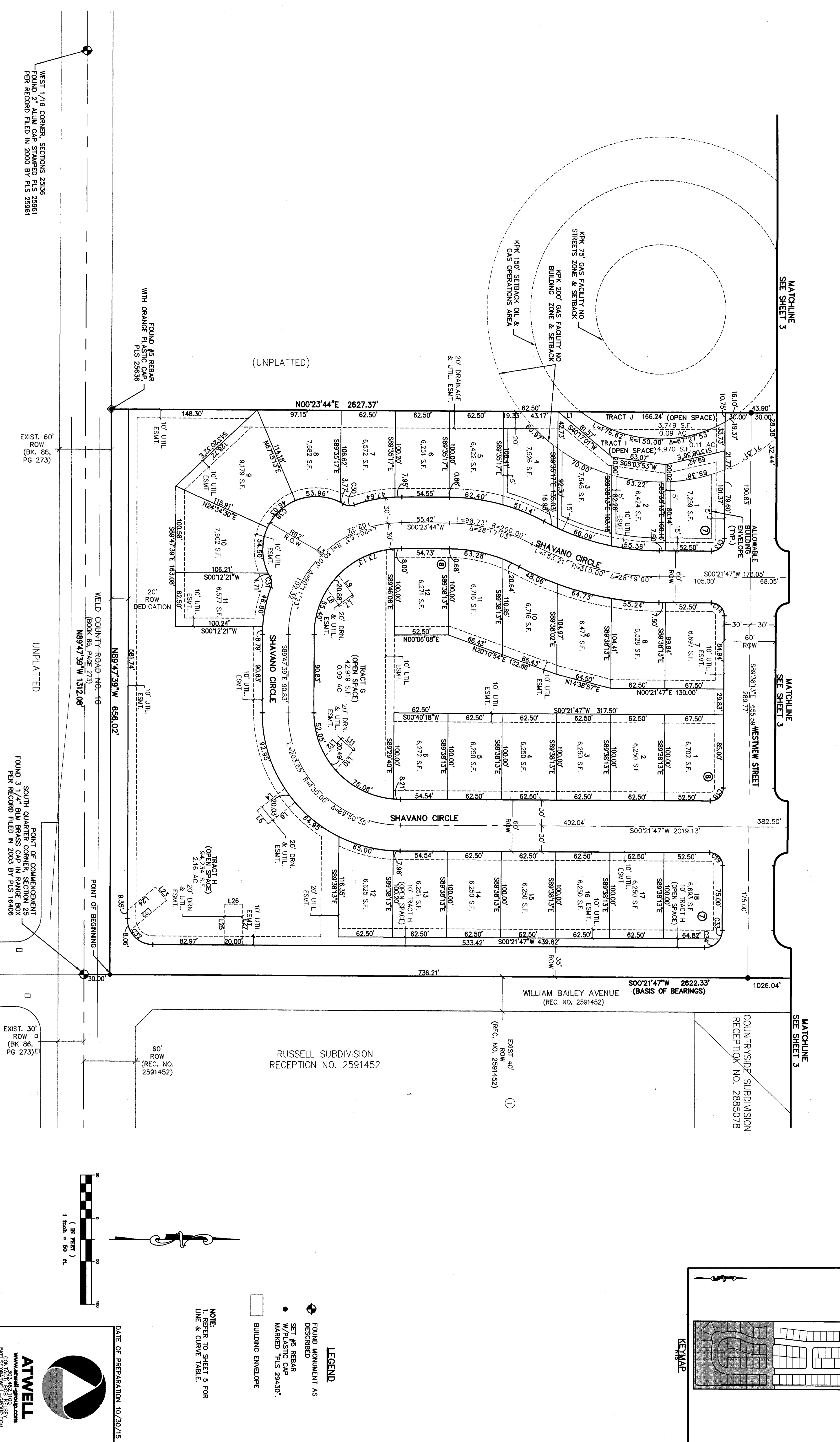
- FOUND MONUMENT AS DESCRIBED
- SET #5 REBAR W/ PLASTIC CAP MARKED PLS 29430*
- BUILDING ENVELOPE



DATE OF PREPARATION 10/30/15

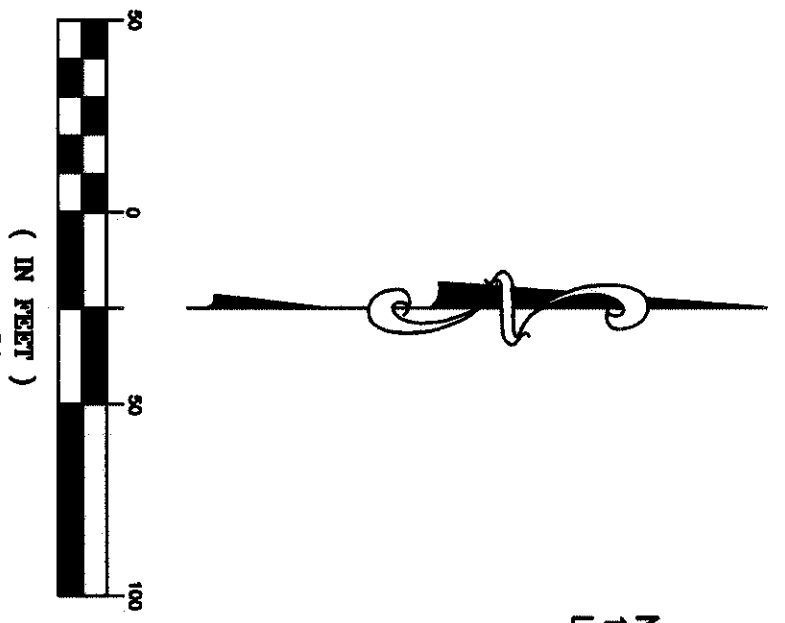
ATWELL
 www.atwell-group.com
 203-482-1100
 203-482-1101
 BUREAU@ATWELLGROUP.COM

WESTVIEW SUBDIVISION
 E 1/2 E 1/2 SW 1/4 SECTION 25, TOWNSHIP 2 NORTH, RANGE 68 WEST OF THE 6th P.M.
 TOWN OF FREDERICK, COUNTY OF WELD, STATE OF COLORADO
 39.46 ACRES TOTAL 121 DWELLING UNITS
 FINAL PLAT
 SHEET 2 OF 5



- LEGEND**
- FOUND MONUMENT AS DESCRIBED
 - SET #5 REBAR W/PLASTIC CAP MARKED PLS 29430
 - BUILDING ENVELOPE

NOTE
 1. REFER TO SHEET 5 FOR LINE & CURVE TABLE.



DATE OF PREPARATION 10/30/15

ATWELL
 www.atwell-group.com
 203 462 1100
 303 462 1101
 BKL@ATWELL-GRUP.COM

WEST 1/16 CORNER, SECTIONS 2936
 FOUND 2" ALUM CAP STAMPED PLS 25961
 PER RECORD FILED IN 2000 BY PLS 25961

EXIST. 60'
 ROW
 (BK. 86,
 PG 273)

UNPLATTED

POINT OF COMMENCEMENT
 SOUTH QUARTER CORNER, SECTION 25
 FOUND 3 1/4" BLM BRASS CAP IN RANGE BOX
 PER RECORD FILED IN 2003 BY PLS 16406

EXIST. 30'
 ROW
 (BK. 86,
 PG 273)