



401 LOCUST STREET • P.O. BOX 435 • FREDERICK, CO 80530-0435

PHONE: (720) 382-5500 • FAX: (720) 382-5520

[WWW.FREDERICKCO.GOV](http://WWW.FREDERICKCO.GOV)

## MEMORIAL TREE POLICY

The Town of Frederick is proud to offer you a special way to remember a loved one or celebrate milestone events such as a birth, wedding or anniversary through our Memorial Bench and Tree Program. We even offer the opportunity to be as involved as you'd like to be in the planting which can be a meaningful experience for all who wish to commemorate the loved one or event with you.

While you are able to select a preferred park and location, all tree plantings are subject to approval by the Town of Frederick to make sure they are in accordance with public need, proper digging zones and the Parks, Open Space and Trails Master Plan. We will make every effort to accommodate your preferences, and will work together with you to find a location that is suitable to all involved.

Trees with a 2" caliper are available in numerous species: Autumn Purple Ash, Honey Locust, Autumn Blaze Maple, Blue Spruce, Austrian Pine and Cottonless Cottonwood. Regardless of species, each tree requires a \$300 donation. The donation includes the purchase and planting of the tree, as well as maintenance for the life of the tree, or replacement should something happen to the tree. It also includes an engraved plate that will be installed onto a perpetual Memorial Tree plaque at Town Hall and can include up to three lines of text with 40 characters each.

Please allow three weeks for planting of the tree, weather permitting. After looking over the accompanying application, please feel free to contact Community Relations Manager, Megan Williams at 720.382.5512 or [mwilliams@frederickco.gov](mailto:mwilliams@frederickco.gov) if you have any questions. A Town representative will contact you after we have received your application.

**Built on What Matters.**

## MEMORIAL TREE APPLICATION

Please complete the information below. After we receive the application, a Town representative will contact you regarding next steps.

Your Name \_\_\_\_\_

Your Address \_\_\_\_\_ Zip \_\_\_\_\_

Home Phone \_\_\_\_\_ Work Phone \_\_\_\_\_

Email Address \_\_\_\_\_

Please check the preferred park for the tree's placement. Keep in mind that all requests must be approved by the Town of Frederick. However, we will make every effort to accommodate your preferences.

- Centennial Park
- Frederick Recreation Area
- James M. Crist Park

Please enclose the proper park aerial map, marking your preferred spot for tree placement with an X.

Please check your tree species preference. Each tree requires a \$300 donation.

- Autumn Purple Ash
- Honey Locust
- Autumn Blaze Maple
- Blue Spruce
- Austrian Pine
- Cottonless Cottonwood

Please check the ways in which you would like to be involved? Check all that apply.

- Help plant the tree
- Notification after planting
- Provided photograph of planted tree
- Provided map of park showing tree location
- Provided donation receipt and certificate
- Other \_\_\_\_\_

Continued on p. 3.

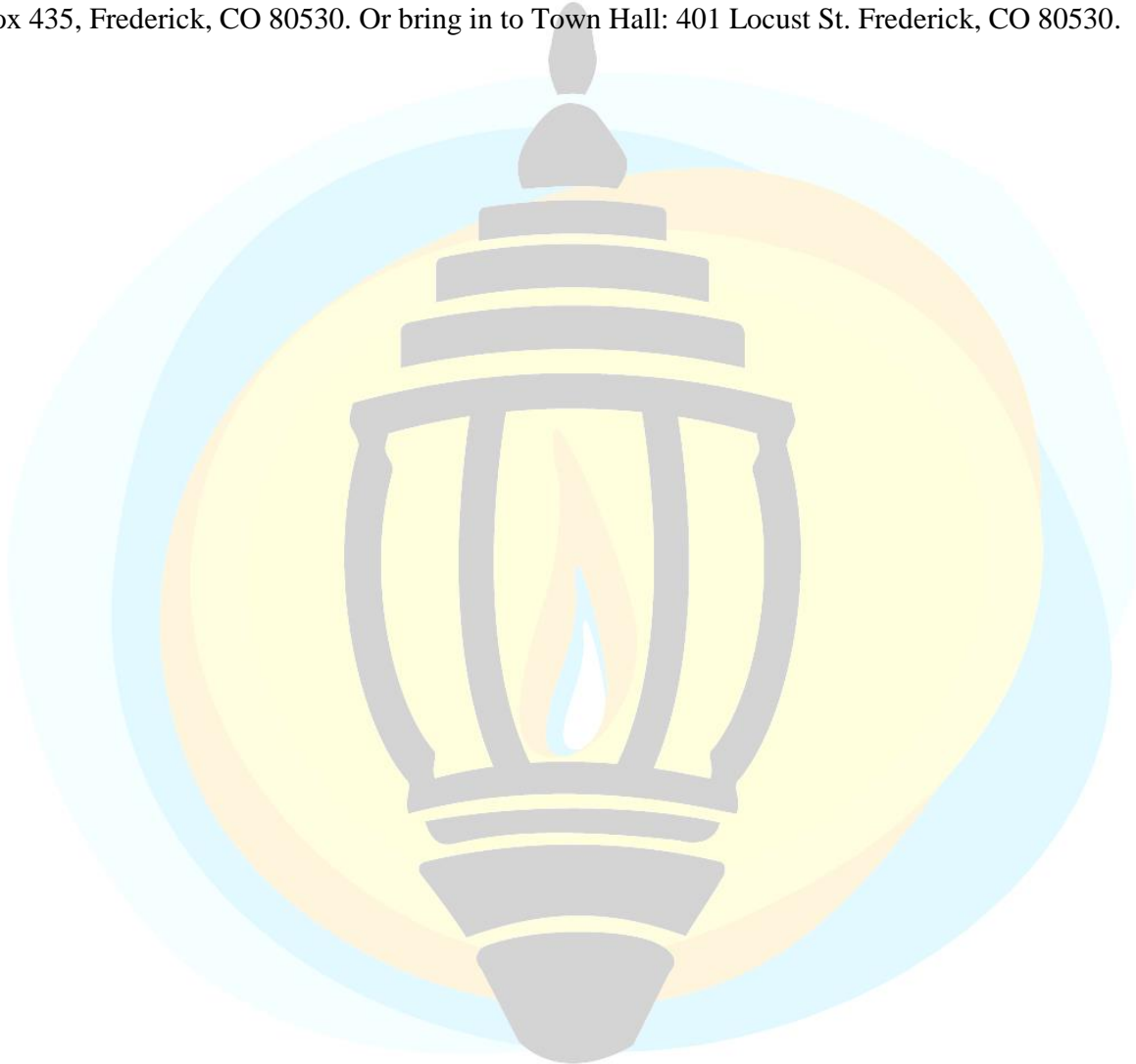
Please print the inscription you would like on the plaque (maximum 40 letters/characters per line, maximum three lines)

---

---

---

Please send this completed form with payment to: Town of Frederick Attn: Megan Williams, P.O. Box 435, Frederick, CO 80530. Or bring in to Town Hall: 401 Locust St. Frederick, CO 80530.





Main Street

8th Street

Locust Street

Maple Street

Centennial Park



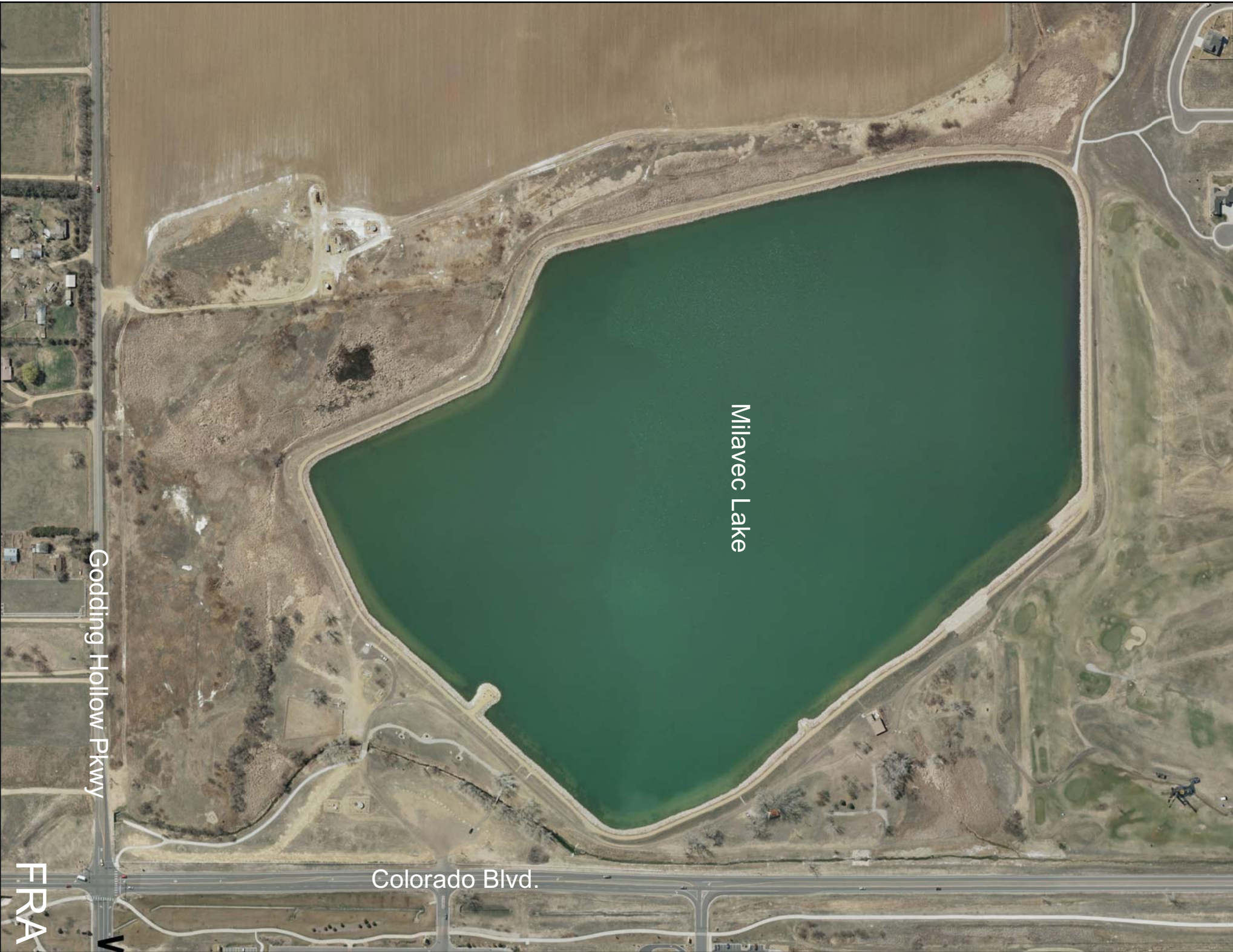
4th Street

Main Street

Elm Street

5th Street

CRIST PARK



Milavec Lake

Goddling Hollow Pkwy

Colorado Blvd.

FRA